

Support the Child Life Program

Gifts of any size—whether \$10, \$100 or \$100,000—support the greatest needs of the Child Life program. Here are examples of how your contribution makes an impact on our patients and families:

\$10-\$100

- Bottles of bubbles.
- Dozens of pinwheels.
- Packets of stickers.

\$100-\$500

- DVDs of new movies that patients watch during magnetic resonance imaging (MRI) scans.
- A Child Life specialist for a day in the Cardiothoracic Intensive Care Unit.
- Medical play kits, including mini blood pressure cuffs and toy syringes.

\$600-\$2,000

- Individual games for PlayStation, Wii and Xbox 360.
- Portable DVD players to entertain children who need distraction during a procedure.
- Bereavement support books.
- An air hockey table for the Teen Lounge.

\$2,500-\$9,000

- iPad Minis to help Child Life specialists explain procedures and educate patients.
- Scrapbooks and scrapbooking materials for one year.
- Sponsorship of a playroom, including supplies and a Child Life assistant, for one month.

\$10,000

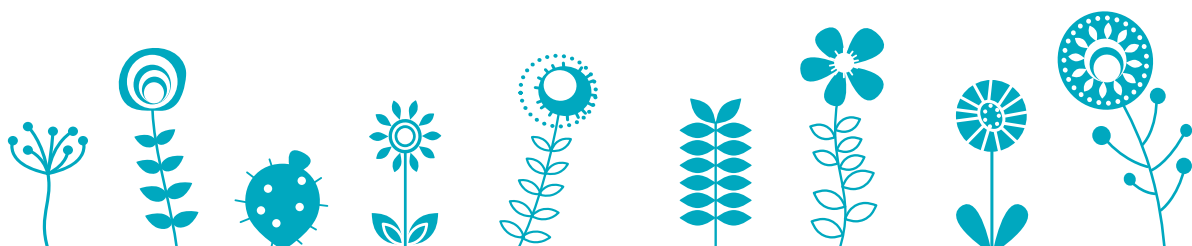
- Hundreds of dolls used for procedure preparation and medical play.
- Art kits that include crayons, colored markers and drawing paper for six months.
- Gaming consoles, TVs and carts to transport the equipment to patient rooms and playrooms.

\$20,000

- Infant bouncer seats, mobiles for cribs and tactile toys for hundreds of patients in the Newborn and Infant Critical Care Unit.

\$30,000

- Child Life program supplies for one year.



Support the Child Life Program: Opportunities for Growth

Help us grow the Child Life program by providing support for additional staff and resources.

\$50,000

- Create an endowment to help ensure that Child Life services at Children's Hospital Los Angeles exist in perpetuity. Endowments begin at \$50,000.

\$200,000

- Support a Child Life assistant for five years. Annual salary: \$40,000.

\$400,000

- Support a Child Life specialist for five years. Annual salary: \$80,000.

\$625,000

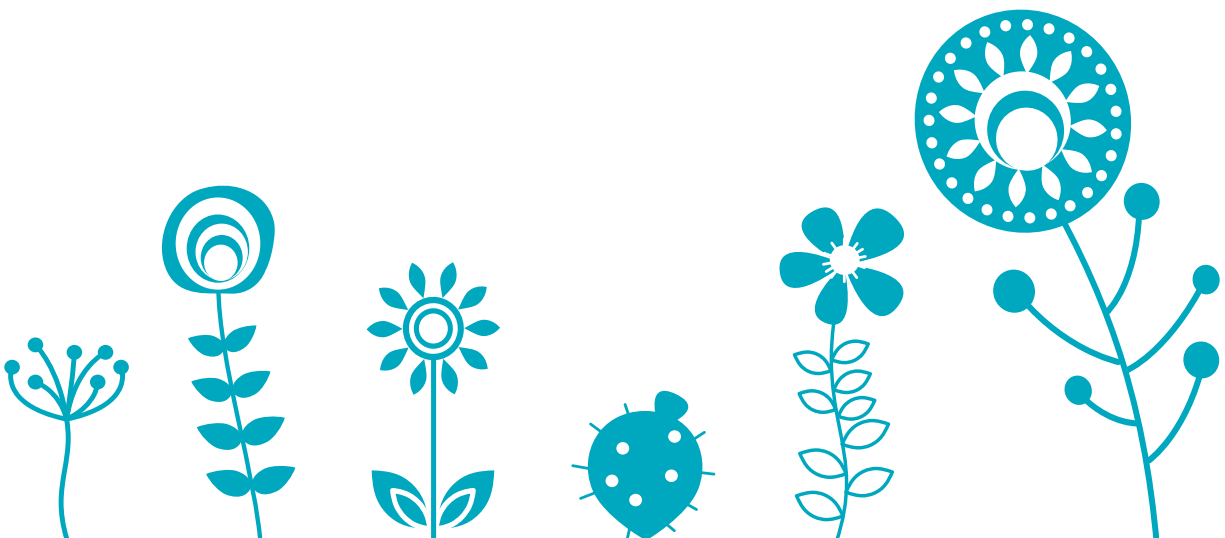
- Support a Child Life manager for five years. A Child Life manager will oversee the team of specialists and assistants, organize services and schedules, spearhead developmentally appropriate programs for patients of all ages and act as an advocate for Child Life within the hospital. Annual salary: \$125,000.

\$1 Million

- Support five Child Life assistants for five years in order to keep our Child Life playrooms open from 8 a.m. – 9 p.m. seven days a week.

\$10 Million

- Fulfill the Child Life Endowment to ensure that Children's Hospital Los Angeles will always have the resources to provide Child Life services to children and families.



To learn more about ways you can support the Child Life Program, contact Julie Halverson-Godson at 323-361-1796 or jhalversongodson@chla.usc.edu.