

The Vision Center

4650 Sunset Blvd., #88
Los Angeles, CA 90027

Phone: 323-361-2347

Fax: 323-361-1592

CHLA.org/VISION

Referrals

Phone: 888-631-2452

Fax: 323-361-8988

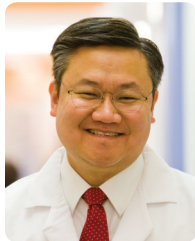
Email: md1@chla.usc.edu

Physician Portal:

<https://myCHLA.CHLA.org>

The Vision Center at Children's Hospital Los Angeles is an international referral center for children with complex eye diseases, and is the only program of its kind in the United States providing expertise in virtually every pediatric ophthalmologic subspecialty.

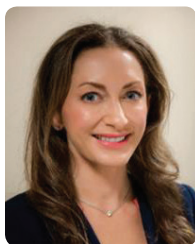
Physicians



Thomas Lee, MD

Chief, Division of Ophthalmology; Director,
The Vision Center, Children's Hospital Los Angeles
Interim Chair, University of Southern California (USC)
Department of Ophthalmology; Associate Professor
of Clinical Ophthalmology, Keck School of Medicine
of USC

Specialties: Pediatric ophthalmology, vitreoretinal
surgery and retinal disease



Jesse Berry, MD

Associate Director, Ocular Oncology; Attending
Physician, The Vision Center, Children's Hospital
Los Angeles
Assistant Professor of Clinical Ophthalmology,
Keck School of Medicine of USC

Specialties: Ocular oncology and pediatric ophthalmology



Mark Borchert, MD

Director, Eye Birth Defects Institute and Eye Technology
Institute; Attending Physician, The Vision Center,
Children's Hospital Los Angeles
Associate Professor of Clinical Ophthalmology and
Neurology, Keck School of Medicine of USC

Specialties: Neuro-ophthalmology and
pediatric ophthalmology

Treated conditions:

- Coats disease
- Coloboma
- Convergence insufficiency
- Extraocular muscles
- Hereditary retinal degeneration
- Hydrocephalus
- Hypopituitarism
- Intracranial pressure monitor
- Morning glory syndrome
- Nasolacrimal duct obstruction
- Optic nerve hypoplasia
- Pediatric and adult strabismus
- Preferential looking test
- Pseudostrabismus
- Raman spectroscopy
- Red reflex testing
- Retinal detachment
- Retinoblastoma
- Retinopathy of prematurity
- Septo-optic dysplasia

Physicians (continued)



Angela Buffenn, MD, MPH

Director, Orbit and Eye Movement Institute; Attending Physician, The Vision Center, Children's Hospital Los Angeles
Assistant Professor of Clinical Ophthalmology, Keck School of Medicine of USC

Specialty: Pediatric ophthalmology



Jonathan Kim, MD

Director, Retinoblastoma Program; Attending Physician, The Vision Center; A. Linn Murphree Chair in Ocular Oncology, Children's Hospital Los Angeles
Associate Professor of Clinical Ophthalmology, Keck School of Medicine of USC

Specialties: Neuro-ophthalmology, pediatric ophthalmology and ocular oncology



Arlanna Moshfeghi, MD, MPH

Attending Physician, The Vision Center, Children's Hospital Los Angeles
Assistant Professor of Clinical Ophthalmology, Keck School of Medicine of USC

Specialty: Pediatric ophthalmology



Aaron Nagiel, MD, PhD

Attending Physician, The Vision Center, Children's Hospital Los Angeles
Assistant Professor of Clinical Ophthalmology, Keck School of Medicine of USC

Specialties: Pediatric ophthalmology, vitreoretinal surgery and retinal



Sudha Nallasamy, MD

Director, Vision Development Institute, The Vision Center, Children's Hospital Los Angeles
Assistant Professor of Clinical Ophthalmology, Keck School of Medicine of USC

Specialty: Pediatric ophthalmology

Physicians (continued)



Bibiana Reiser, MD, MS

Director, Cornea Institute, The Vision Center,
Children's Hospital Los Angeles
Assistant Professor of Clinical Ophthalmology,
Keck School of Medicine of USC

Specialty: Corneal and external diseases

Programs and Services

- Children's Optical
- Contact Lens Program
- Cornea Institute
- Eye Birth Defects Institute
- Eye Technology Institute
- Orbit and Eye Movement Institute
- Orthoptics Program
- Retina Institute
- Retinoblastoma Program

The Vision Center Highlights

- Home to the largest pediatric ophthalmology program in the United States.
- Receives more than 14,000 outpatient visits and performs more than 1,300 ophthalmic surgeries each year.
- Annually performs the largest number of pediatric cornea and cataract surgeries in the United States, including 25-30 corneal transplants.
- The only facility in the world to use an innovative technique that combines the use of a tiny endoscope coupled with a portable, bedside spectral domain optical coherence tomograph (SDOCT) for the early detection and treatment of retinal detachment from retinopathy of prematurity (ROP).
- One of only a few facilities in the United States to provide treatment for refractive errors with LASIK (laser-assisted) surgery for children who cannot utilize contact lenses.

Main Location

The Vision Center

4650 Sunset Blvd., #88
Los Angeles, CA 90027
Phone: 323-361-2347

Satellite Locations

CHLA – Arcadia

468 E. Santa Clara St.
Arcadia, CA 91006
Phone: 626-795-7177

CHLA – South Bay

3440 Torrance Blvd., Suite 100
Torrance, CA 90503
Phone: 310-303-3890

CHLA – Valencia

23838 Valencia Blvd., Suite 140
Valencia, CA 91355
Phone: 661-362-1240