

Neurological Institute Comprehensive Epilepsy Program

4650 Sunset Blvd. #82
Los Angeles, CA 90027

Phone: 323-361-2471
Fax: 323-361-1109

Referrals

Phone: 888-631-2452
Fax: 323-361-8988
Email: md1@chla.usc.edu
myCHLA Physician Portal:
<https://myCHLA.CHLA.org>

CHLA.org/NEURO

The Comprehensive Epilepsy Program at Children's Hospital Los Angeles provides every tool, procedure and expert needed for the diagnosis and treatment of all levels of epilepsy—including a New-Onset Seizure Clinic and a state-of-the-art inpatient Epilepsy Monitoring Unit (EMU).

Our multidisciplinary team consists of experts from neurology, neurosurgery, neuropsychology, radiology, anesthesiology, social work, physical/occupational therapy and nursing.

Providers



Deborah Holder, MD

Director, Comprehensive Epilepsy Program;
Attending Physician, Division of Neurology,
Neurological Institute, Children's Hospital Los Angeles
Associate Professor of Clinical Neurology,
Keck School of Medicine of USC



Andy Kim, MD

Director, EEG Lab; Attending Physician,
Division of Neurology, Neurological Institute,
Children's Hospital Los Angeles
Associate Professor of Clinical Neurology,
Keck School of Medicine of USC



Matt Lallas, MD

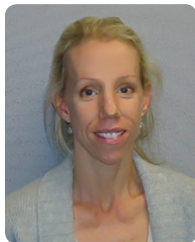
Attending Physician, Division of Neurology,
Neurological Institute, Children's Hospital Los Angeles
Assistant Professor of Clinical Neurology,
Keck School of Medicine of USC

The Comprehensive Epilepsy Program has Level 4 certification—the highest available—from the National Association of Epilepsy Centers. Our four pediatric epileptologists are Board-certified in adult and pediatric neurology, epilepsy and clinical neurophysiology. They personalize care for every child's unique needs and strive to improve the quality of life for all children living with epilepsy. Whether by medication, diet or surgery, we offer every solution available for children with epilepsy.

Our EEG laboratory is accredited by ABRET (the national neurodiagnostic credentialing and accreditation organization) and meets the technical and quality standards acknowledged for laboratory care.

(continued on next page)

Providers (continued)



Michele Van Hirtum-Das, MD

Director, Epilepsy Monitoring Unit; Attending Physician, Division of Neurology, Neurological Institute, Children's Hospital Los Angeles
Assistant Professor of Clinical Neurology and Pediatrics, Keck School of Medicine of USC



Vijay Vishwanath, MD, PhD

Attending Physician, Division of Neurology, Neurological Institute, Children's Hospital Los Angeles
Assistant Professor of Clinical Neurology and Pediatrics, Keck School of Medicine of USC

Epilepsy Services

- New-Onset Seizure Clinic – Evaluates patients no more than two weeks after their first seizure event, to alleviate families' worries, make accurate diagnoses from the very beginning, and prevent any harm from additional, unnecessary or untreated seizures.
- Full-service inpatient Epilepsy Monitoring Unit
- Video electroencephalogram (vEEG)
- Outpatient EEG and video EEG
- 3T magnetic resonance imaging (MRI)
- Functional MRI
- Positron emission tomography (PET) scan
- Single-photon emission computed tomography (SPECT) scan
- Source localization via CURRY software
- Neuropsychiatric evaluations
- Surgical solutions – Our experienced surgeons offer a two-phase surgical process called brain mapping, which is often a cure. The process can pinpoint the exact region of the brain that is causing seizures, allowing surgeons to remove problem areas and leave healthy brain untouched.
 - Invasive monitoring
 - Laser ablation
 - Resection with intraoperative EEG monitoring
 - Neuromodulation
 - Vagus nerve simulation (VNS)
 - Responsive neurostimulation (RNS)
 - Minimally invasive options (stereo EEG)
- Diet program with two full-time dietitians
 - Ketogenic diet
 - Modified Atkins diet
- Physical and occupational therapy
- Genetic and neurogenetic testing and evaluation
- Interfacing with schools for Individualized Education Plan (IEP) coordination

Main Office

Neurological Institute Comprehensive Epilepsy Program

4650 Sunset Blvd., #82
Los Angeles, CA 90027

Specialty Care Centers

Arcadia

468 E. Santa Clara St.
Arcadia, CA 91006
Phone: 626-795-7177

Encino

5363 Balboa Blvd., Suite 121
Encino, CA 91316
Phone: 818-788-3061

Santa Monica

2020 Santa Monica Blvd., Suite 400
Santa Monica, CA 90404
Phone: 310-820-8608

South Bay

3440 Torrance Blvd., Suite 100
Torrance, CA 90503
Phone: 310-303-3890

Valencia

23838 Valencia Blvd., Suite 140
Valencia, CA 91355
Phone: 661-362-1240

Awards and Recognitions

- CHLA surgeons perform more than 100 epilepsy surgeries a year and have corrected seizure disorders in patients as young as 2 weeks old.
- Our New-Onset Seizure Clinic is one of the largest programs of its kind in the state.
- Children's Hospital Los Angeles is ranked No. 9 nationally for neurology and neurosurgery in the 2019-20 U.S. News & World Report Honor Roll.