

CHILDREN'S HOSPITAL LOS ANGELES

Annual Report
2024

Fiscal Year

2024 Statistical Report

CLINICAL

386

Active Beds



18,397

Discharges



16,819

Surgeries



6.4 Days

Average Length
of Stay

1,002

Medical Staff
Members



7,489

Employees



747,224

Patient Visits



118,436

Patient Days



RESEARCH

\$51.4 Million

Total National Institutes
of Health Funding



597

Active Clinical Trials



\$167.9 Million

Total Research Funding



NATIONAL RANKINGS

Top 10

in the Nation

#1

in Pacific Region*

#1

in California*

Ranked in

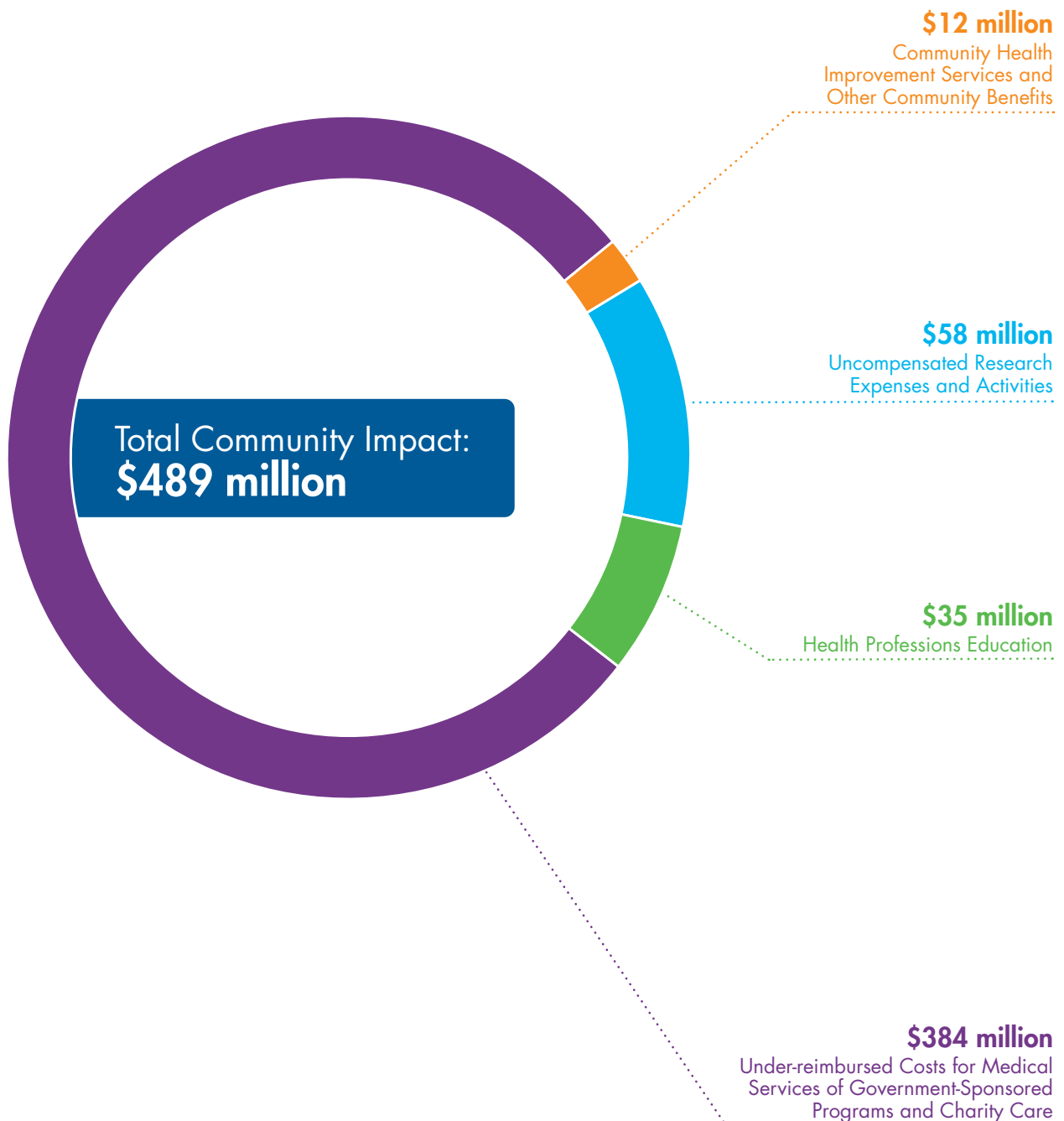
11 Specialties



*Tied in the ranking.

COMMUNITY IMPACT

Fiscal Year 2024





A Letter from the Chief Executive Officer

At Children's Hospital Los Angeles, every moment of every day offers an opportunity to bring healing, hope, and compassion to the lives of children and their families. This past year, driven by the remarkable resilience of CHLA team members, the organization has continued to persevere against headwinds challenging the entire health care landscape. As a result, this annual report stands as a testament to our collective and enduring commitment to the hundreds of thousands of lives CHLA impacts each year.

From opening a leading-edge Interventional Radiology Suite to make procedures safer and faster for children, to pioneering research and international collaborations that are reshaping the way the world diagnoses aggressive childhood cancers, to launching programs that address critical needs in health equity and workforce development while strengthening community connections, I am confident you will find inspiration in the pages within.

These highlights represent but a fraction of the initiatives, clinical programs, research projects, acts of service, educational opportunities, and other innovative offerings that come together to demonstrate the extraordinary focus of our team members on creating hope and building healthier futures for every infant, child, and youth with whom CHLA interacts.

Please accept my profound thanks for your steadfast support of Children's Hospital Los Angeles, and I know that as you explore this report, you will see why CHLA is a trusted national and global leader in pediatric health care.

Warmest regards,

A handwritten signature in black ink, reading "Paul S. Viviano". The signature is fluid and cursive, with the first letters of the first and last names being capitalized and prominent.

Paul S. Viviano
Chief Executive Officer

ZONES OF IMPACT



PATIENT CARE

The CARPEDIEM Cardio-Renal Pediatric Dialysis Machine is a new treatment for small babies with acute kidney injury or kidney failure. Children's Hospital

Los Angeles began using this equipment in 2023, shortly after the Food and Drug Administration approved the device. The technology provides continuous renal replacement therapy (CRRT) for infants weighing 5-10 pounds. It is an improvement from the machines designed for larger children and adults, which do not always provide the precise volumes needed to safely perform CRRT in very small infants. All of the CARPEDIEM system's materials are designed for small infants, including the tubing and filters. The machine works by filtering the blood, removing waste products and excess fluid, and returning the cleaned blood to the baby's bloodstream. During Fiscal Year 2024, CHLA was able to treat 11 babies with this therapy—a total of 207 CARPEDIEM treatment days.



EDUCATION

The brand-new Pediatric Pathway Program at Children's Hospital Los Angeles welcomed its first eight nursing students to the hospital this fall in partnership with Mount

Saint Mary's University. The program seeks to address two key challenges: the continued shortage of skilled nurses nationwide, and the need to accelerate nursing students' paths from academia to the workforce while expanding their hands-on clinical experience. Pediatric Pathway recruits students pursuing a Bachelor of Science in nursing with a demonstrated interest in pediatrics, and immerses them in a custom-built clinical practicum aligned to their academic studies. Upon graduation, students are better prepared to deliver safe, competent, independent nursing care. Pediatric Pathway students can apply to CHLA's RN Residency Program and join the nursing workforce sooner via an accelerated orientation process.



INNOVATION

Children's Hospital Los Angeles celebrated the opening of its new Interventional Radiology Suite. The state-of-the-art suite features equipment not found at

any other pediatric hospital. Interventional radiology uses minimally invasive, image-guided procedures to diagnose and treat a variety of conditions, often helping children to avoid open surgery. Fluoroscopy and CT scanning are commonly used, but CHLA is the first children's hospital in the country to have a machine that combines these two capabilities, which "enables us to pick up on subtle but clinically consequential findings that otherwise would be very challenging to see," Joseph Miller, MD, MS, Director of Interventional Radiology and co-Director of the Vascular Anomalies Center, says. "The new technology in our suite is allowing us to do more delicate procedures safer and faster—with less anesthesia time—while minimizing radiation doses for both patients and staff."



RESEARCH

Retinoblastoma is an aggressive eye cancer that cannot be biopsied in the way that most cancers are. Doctors have had to rely on clinical examination

and imaging to detect it. Jesse Berry, MD, Chief of Ophthalmology at Children's Hospital Los Angeles, developed a new way to diagnose retinoblastoma by sampling the aqueous humor—the fluid at the front of the eye. These liquid biopsies offer genetic and chromosomal information that gives a more complete picture of each child's disease and allows lifesaving treatment to be administered sooner. "We get a trove of information, things that were impossible to see and know before," Dr. Berry says. The National Cancer Institute of the National Institutes of Health has awarded Dr. Berry \$2.8 million to lead the first prospective international retinoblastoma liquid biopsy

study to date. It will include samples from 18 centers, and all material will be processed and studied at CHLA under the direction of Dr. Berry.



COMMUNITY IMPACT

With the support of state funding, the Collective of Youth Leaders was established by the hospital's Substance Use Prevention and Treatment Program in Summer 2023. The group consists of high school-age youth who are Black, Indigenous, and people of color, most of whom live in Central and South Los Angeles. The Collective of Youth Leaders fosters an environment where youth delve into critical issues facing their communities. From learning about the war on drugs and its detrimental effects to understanding social determinants of health and structural racism, these young and dynamic leaders focus on achieving positive change in their communities. Substance use prevention—specifically, the prevention of opioid overdoses—is a major priority of the collective. By July 2024, the group of over 20 youth had provided education to nearly 700 young people and community members about overdose prevention, and successfully advocated for increased awareness and access to Narcan on school campuses and in their communities.



GROWTH

CHLA launched a new program to provide bariatric surgery to children and adolescents. The program, created through a partnership with Keck Medicine of USC, aligns with American Academy of Pediatrics guidelines, which recommend early, proactive interventions for the treatment of children and adolescents living with obesity. The main operation performed is a laparoscopic sleeve gastrectomy, also called a “gastric sleeve.” In this minimally invasive procedure, surgeons remove about 75% of a patient's stomach, creating a smaller gastric pouch shaped like a banana, or sleeve.

“This is not about the size of one's body or the number on the scale,” Alaina Vidmar, MD, Medical Director of Obesity Medicine and Bariatric Surgery, says. “It's about preventing the life-limiting complications of pediatric obesity. Our goal is to give each child the best chance for a long and healthy life.” In the program's first year, the team conducted 70 surgeries.



PHILANTHROPY

The hospital has several new endowed chairs that fund efforts in research, clinical care, and education. The Roberta G. Williams, MD, Chair in Pediatrics, established by the WHH Foundation, is held by Robert Adler, MD, MEd, Vice Chair for Clinical, Department of Pediatrics. The Hearthland Chair in Health Equity in Surgery, created by The Hearthland Foundation, is held by the Department of Surgery's Vice Chair of Diversity, Equity, and Inclusion Bianca Edison, MD, MS, also an attending physician in the Jackie and Gene Autry Orthopedic Center. CHLA's Associates and Affiliates groups have been instrumental in forming multiple endowed chairs: The Pasadena Guild Chair in Clinical Immunology and Allergy, held by Ronald Ferdman, MD, MEd, Chief of Clinical Immunology and Allergy; the Las Madrinas Chair in Developmental-Behavioral Pediatrics held by Douglas Vanderbilt, MD, MS, MBA, Chief of Developmental-Behavioral Pediatrics and co-Director of the Behavioral Health Institute; the Associates Chair in Ophthalmology held by retinal surgeon Thomas C. Lee, MD; and the Associates Chair in Pulmonology and Sleep Medicine held by Sally L. Davidson Ward, MD, Chief of Pulmonology and Sleep Medicine. Endowed chairs are a vital form of philanthropy that give the institution the ability to recruit and retain leaders in pediatric medicine.

STATEMENT OF OPERATIONS

July 1, 2023, to June 30, 2024
(in thousands)

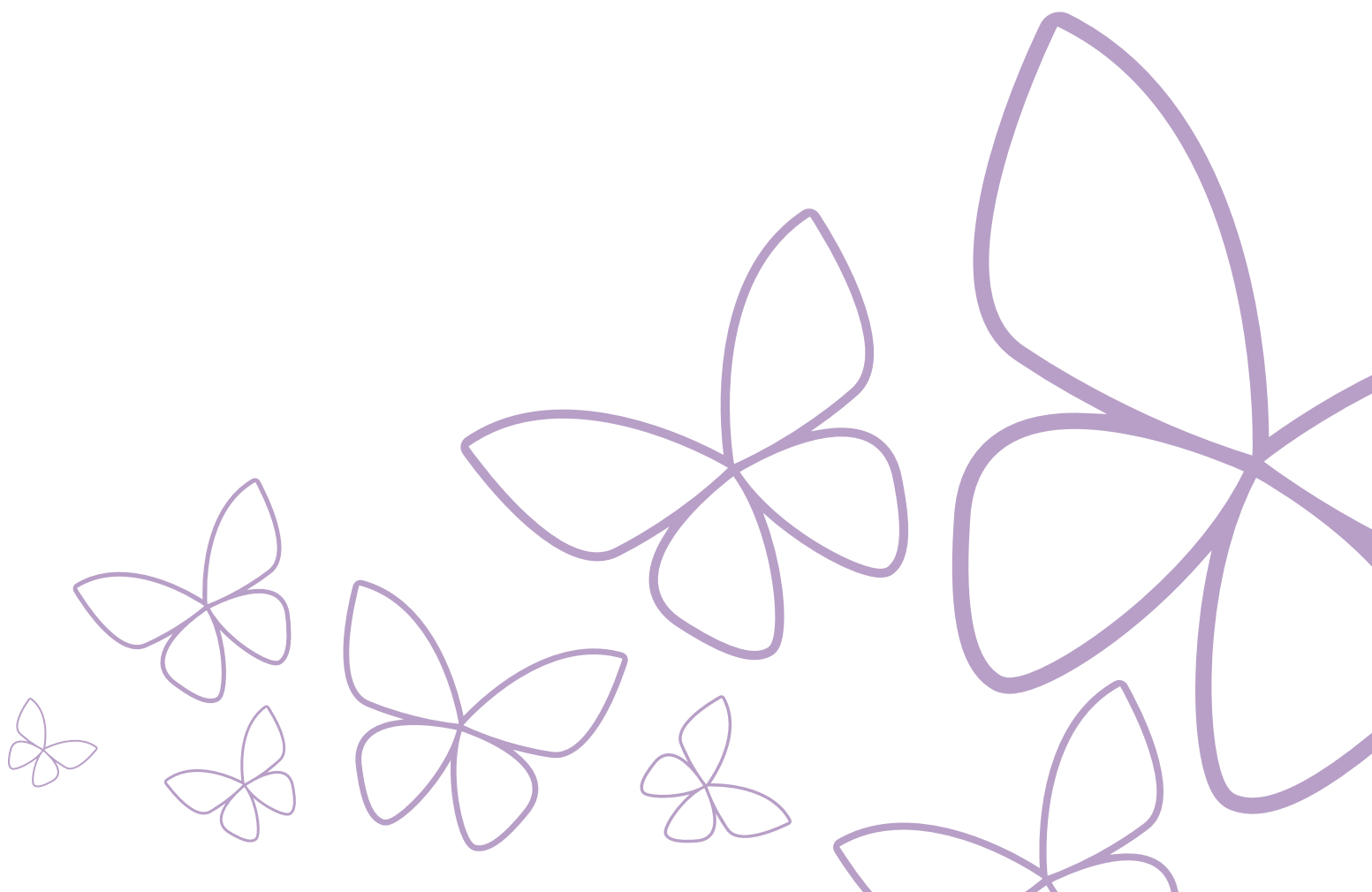
Total Operating Revenue	\$1,740,740
--------------------------------	--------------------

LESS OPERATING EXPENSES:

Salaries and Benefits	\$970,094
Professional Fees and Purchased Services	313,974
Supplies	265,925
Depreciation, Amortization and Interest	99,385
Other	169,034

Total Operating Expenses	\$1,818,412
---------------------------------	--------------------

Available for reinvestment in the mission	(\$77,672)
--	-------------------



Annual Report 2024

Post Office Box 27980

Los Angeles, CA 90027-0980

Change Service Requested

HOSPITAL LEADERSHIP

Paul S. Viviano

Chief Executive Officer

Lara M. Khouri

President and Chief Operating Officer

Robert Adler, MD, MEd

Associate Pediatrician-in-Chief; Physician Advisor, Provider Relations and Visitor Services; Roberta G. Williams, MD, Chair in Pediatrics (CHLA); Professor of Pediatrics (USC)

Conrad Band

Senior Vice President and Chief Information Officer

Alexandra Carter, MBA, CFRE

Senior Vice President and Chief Development Officer

Sylvia Del Castillo, MD

Chief of Staff; Medical Director, Cardiothoracic Intensive Care Unit (CHLA); Clinical Associate Professor of Pediatrics (Clinician-Educator) (USC)

Kelly M. Johnson, PhD, RN, NEA-BC

Senior Vice President of Patient Care Services and Chief Nursing Officer

Alexander R. Judkins, MD, FCAP, FRCP (Edin)

Pathologist-in-Chief; Executive Director, Center for Personalized Medicine; Chair, Department of Pathology and Laboratory Medicine (CHLA); Professor (Clinical Scholar) and Vice Chair, Department of Pathology (USC)

Mark D. Krieger, MD

Senior Vice President and Surgeon-in-Chief; Billy and Audrey L. Wilder Chair in Neurosurgery; Professor of Clinical Neurosurgery (USC)

Pat Levitt, PhD

Senior Vice President and Chief Scientific Officer; Director, The Saban Research Institute; Simms/Mann Chair in Developmental Neurogenetics (CHLA); W.M. Keck Provost Professor of Neurogenetics (USC)

M. Scott Lieberenz, MSA, CPA

Senior Vice President and Chief Financial Officer

Marvin D. Nelson Jr., MD, MBA, FACR

Radiologist-in-Chief; Chair, Department of Radiology; John L. Gwinn Professor of Radiology (CHLA); Professor of Radiology (USC)

Grace E. Oh, JD, MBA

Senior Vice President and General Counsel

Hanna Song, PhD

Senior Vice President and Chief Diversity, Equity and Inclusion Officer

James E. Stein, MD, MSc, FACS, FAAP

Senior Vice President and Chief Medical Officer; Ford Theodore Miller Murphy Chair in Surgical Oncology (CHLA); Professor of Clinical Surgery (USC)

Mamoon Syed, MHA

Senior Vice President and Chief People Officer

Alan S. Wayne, MD

Pediatrician-in-Chief; Senior Vice President of Academic Affairs; Pasadena Guild Chair (CHLA); Professor and Chair, Department of Pediatrics (USC)

Randall C. Wetzel, MBBS, MRCP, LRCS, MSB, FAAP, FCCM

Interim Chair, Department of Anesthesiology Critical Care Medicine (CHLA); Professor of Anesthesiology and Pediatrics (USC)